

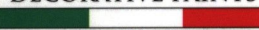


WWW.RIVEDIL.COM - WWW.RIVEDIL.COM - WWW.RIVEDIL.COM

O X Y D A
Béton & Cementsi

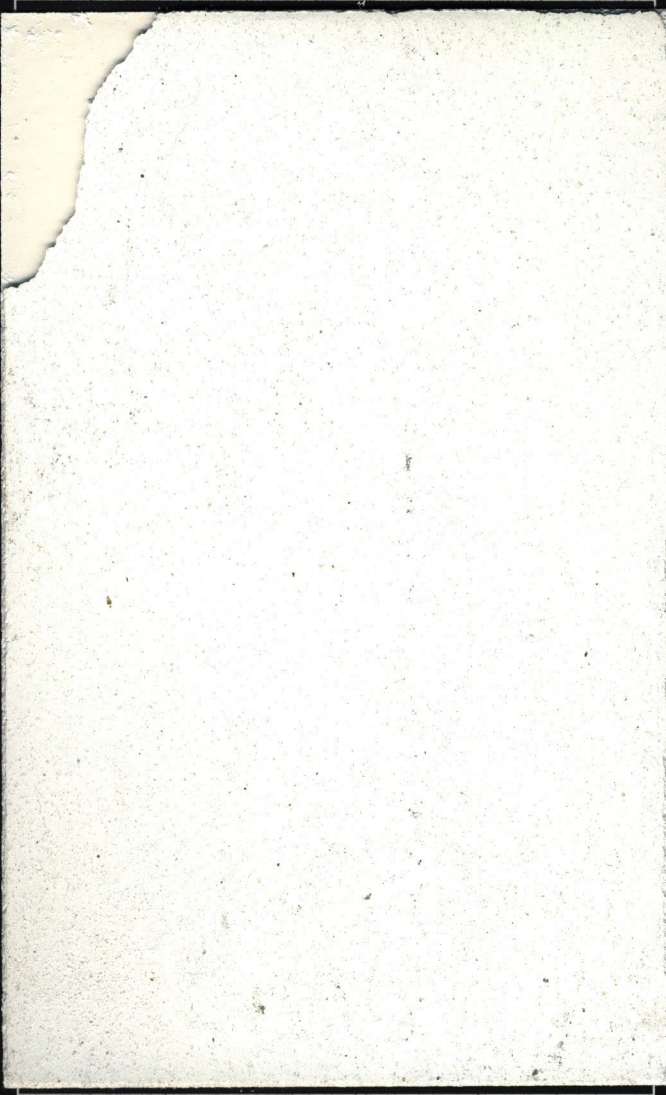


LA DECORAZIONE DEL III MILLENNIO

DECORATIVE PAINTS

MADE IN ITALY

DELUXE COLLECTION

WALL & FLOOR



WHITE



BASE



OX - 21



OX - 22



OX - 23



OX - 24

WALL & FLOOR



OX - 25



OX - 26



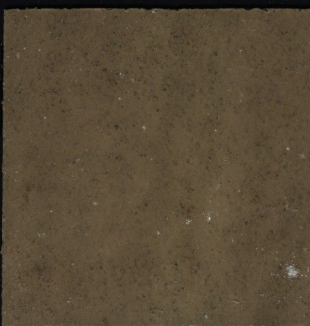
OX - 27



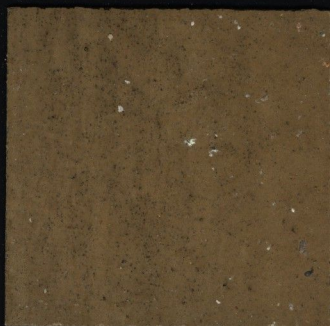
OX - 28



OX - 29



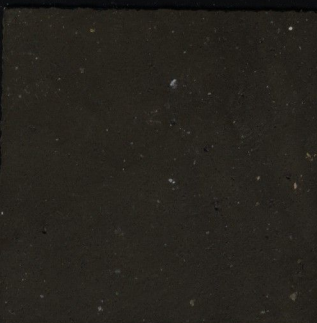
OX - 30



OX - 31



OX - 32



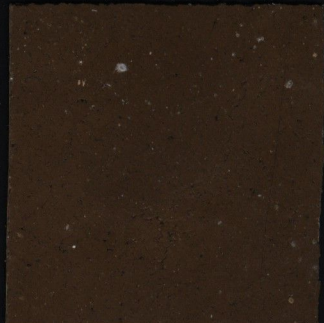
OX - 33



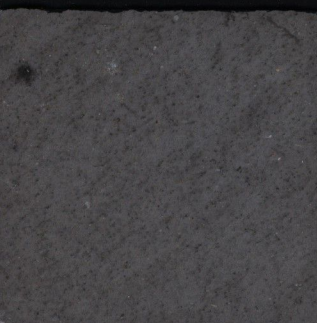
OX - 34



OX - 35



OX - 36



OX - 37



OX - 38



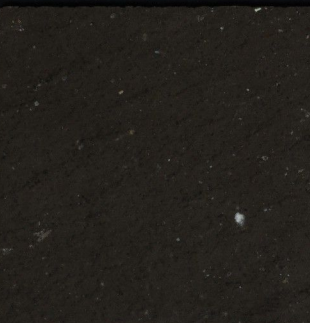
OX - 39



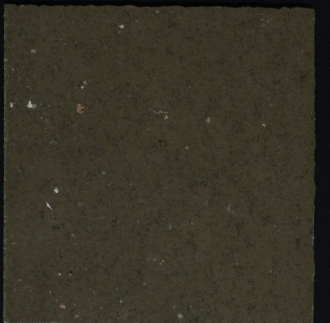
OX - 40



OX - 41



OX - 42



OX - 43



OX - 44

WALL & FLOOR



BROKEN BÉTON - OX 53



OX - 45



OX - 46



OX - 47



OX - 48



OX - 49



OX - 50



OX - 51



OX - 52

METALLIC

WALL

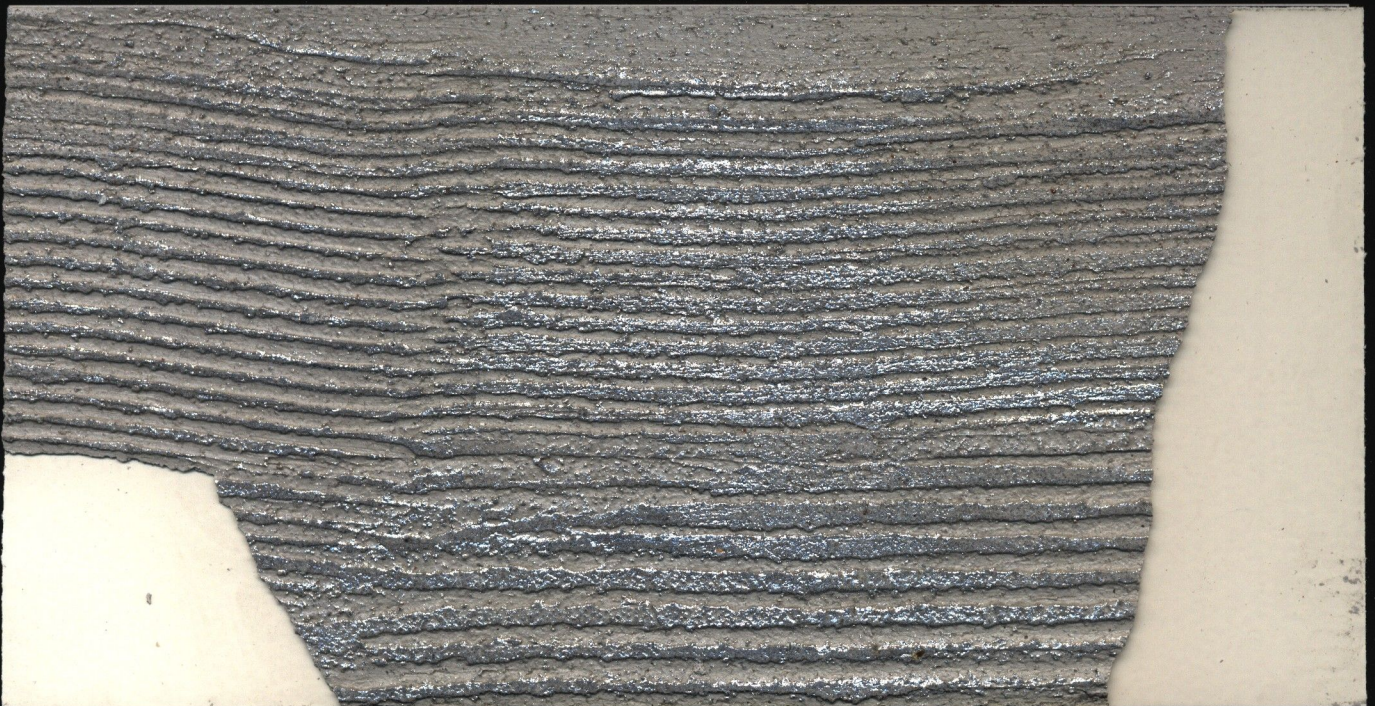
RUST

WALL



OX 23 + Fissativo tre stelle + Structura HI-TECH Alluminio/Rame

OXYDA BASE + Structura HI-TECH Rame + Rust Paint



WOOD OX 22 + SCUDO I + SCUDO II

WALL & FLOOR



photo: Anik Ouellet - info@atelierb.ca



photo: Anik Ouellet - info@atelierb.ca



photo: Anik Ouellet - info@atelierb.ca



Prodotto concepito specialmente come Fondo per applicare OXYDA su supporti come piastrelle e altri supporti speciali. Seguire la scheda tecnica per l'applicazione del FONDO OXYDA.

Product specially designed as a Primer to apply OXYDA on substrates such as tiles and other complex supports. Follow the data sheet for the application of the FONDO OXYDA.

Produit spécialement conçu comme couche de fond pour les surfaces carrelées murs ou sols, et autres supports difficiles. Lire la fiche technique pour l'application du FONDO OXYDA.

RESA FONDO OXYDA - 20 KG = 18 - 20 mq · DILUIZIONE FONDO OXYDA - 20 KG = 4 L acqua



OXYDA ha la particolarità ed il vantaggio di essere in polvere, subito pronto all'uso dopo averlo mescolato con acqua.

OXYDA è stato concepito per ottenere il tipico effetto BÉTON ciré (cemento cerato) tanto famoso nel mondo. OXYDA per un ambiente urbano e contemporaneo.

OXYDA has the characteristic and the advantage of being in powder, ready to use simply after mixing with water. OXYDA is designed for the typical BÉTON ciré effect, as well as many other famous worldwide effects. OXYDA for an urban and contemporary style.

OXYDA a la caractéristique et l'avantage d'être en poudre, prête à l'emploi après l'avoir mélangé avec de l'eau. Le produit est conçu pour obtenir le fameux effet BÉTON ciré, ainsi que de nombreux autres effets décoratifs. Oxyda pour un style urbain et contemporain.

RESA OXYDA - 20 KG = 8 - 10 mq 2 mani finite · DILUIZIONE OXYDA - 20 KG = 8 L acqua

SCUDO I & II

SCUDO I & II è un olio protettivo. Specialmente concepito per proteggere OXYDA Béton & CEMENTI e altri rivestimenti.

SCUDO I & II is a protective waxy oil. Specially designed to protect OXYDA Béton & CEMENTI and other coating.

SCUDO I & II est une huile de protection spécifique, spécialement élaborée pour protéger les finitions OXYDA Béton & CEMENTI et autres finitions minérales.

RESA SCUDO I - 15 L = 160 - 180 mq

RESA SCUDO I - 0,750 L = 8 - 10 mq

Pronto all'uso

RESA SCUDO II - 15 L = 160 - 180 mq

RESA SCUDO II - 0,750 L = 8 - 10 mq

Pronto all'uso

DECOR EPOXY A&B

Decor Epoxy bi-componente A&B è una vernice all'acqua trasparente adatta per ambienti in presenza di alimenti. Resiste perfettamente a acqua, detersivi, oli, grassi ecc. Il prodotto inoltre, garantisce un'elevata resistenza al graffio.

Decor Epoxy two-component A&B is a waterborne transparent finish, designed to be used in food-related environments. Resists water, soaps, oil, grease etc. And high abrasion resistance.

Decor Epoxy A&B est un vernis bicomposants, transparent, en phase aqueuse de type alimentaire. Hydrofuge et résistant au savon, huile, gras, etc. Montrant une forte résistance à l'abrasion.

Broken Béton - Stencil: studs effect



Rust - Stencil: studs effect





RIVEDIL ITALIA

info@rivedil.com - export@rivedil.com

Tel. (+39) 0832731293 - Fax (+39) 0832731690

COD. 412 / 15 A TINTOMETRICO TINTING



RIVEDIL.
COM

SCARICA ONLINE INFO PRODOTTI
www.rivedil.com